

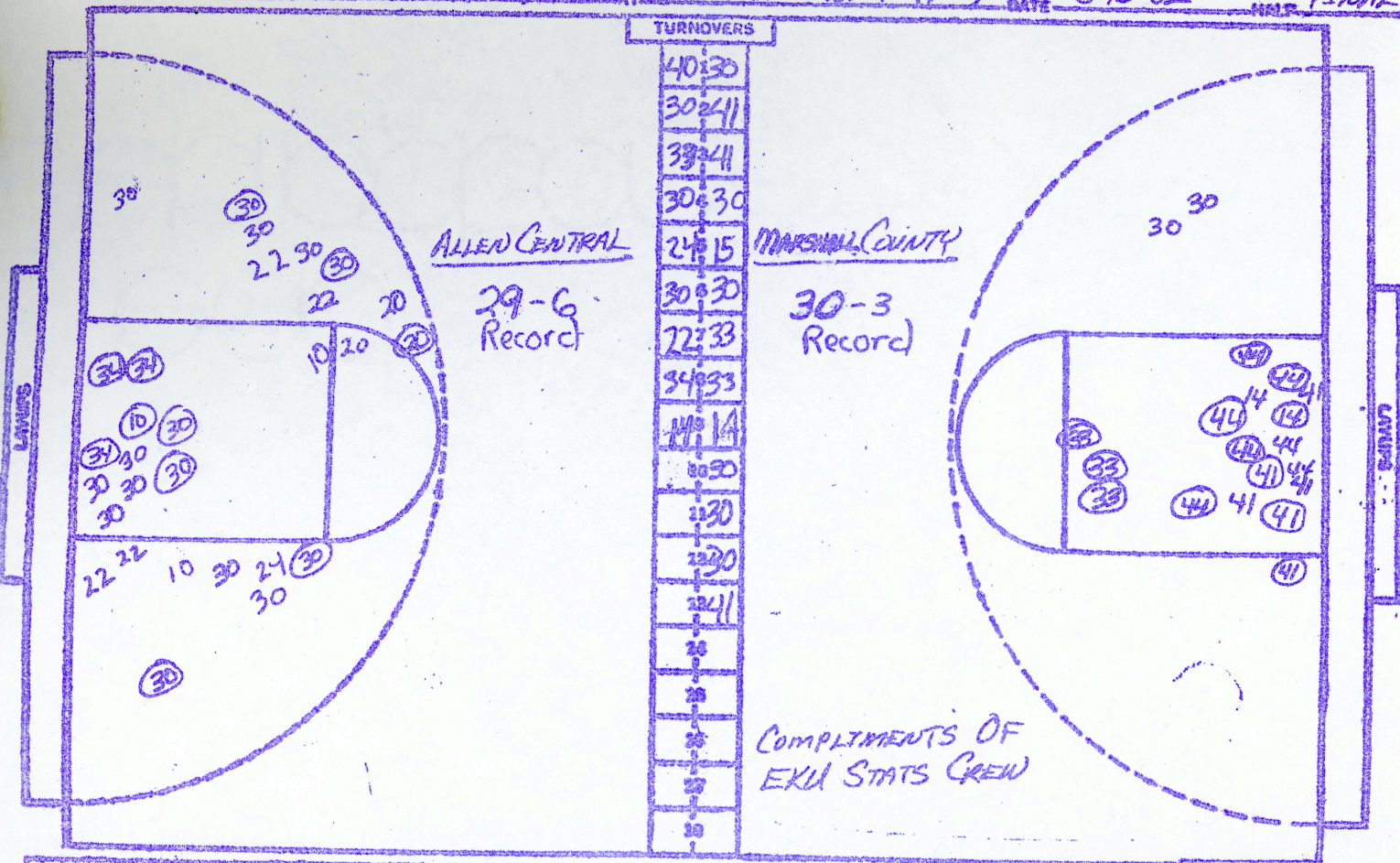
CAGE CHART

ALLEN CENTRAL (15TH)

vs MARSHALL COUNTY (1ST)

DATE 3-18-82

NMFC FINAL



NO.	ALLEN CENTRAL	FG-FGA	FT-FTA	RD	P	TP	A
30	RAMONA HALL	9-22	2-3	7	4	20	0
40	JALENDA HOWARD	1-4	1-4	0	2	3	0
34	KIM SHEPHERD	4-5	3-5	6	5	11	1
20	KATHY HOWARD	1-8	2-7	1	0	4	4
22	LISA GREENE	0-9	0-0	3	0	0	2
10	RONDA COMBS	1-3	0-0	3	1	2	0
24	ROBBIN ROOPE	0-1	2-3	2	1	2	1
42	BELINDA CLICK	0-0	0-1	0	0	0	0
14	MISSY BENTLEY	0-0	0-0	0	1	0	0
44	WENDY WILEY	0-0	0-0	0	0	0	0
50	ANDI WILKES	0-0	0-0	0	0	0	0
32	SHERI ROBINSON	0-0	0-0	1	0	0	0
		-	-				
		-	-	2 D.B.			
TOTALS		16-52	10-23	25	14	42	8

PERCENTS

30.8 43.5 2

TEAM REBOUNDS (NOT IN TOTAL)

ALLEN CENTRAL
6-8-18-10=42

NO.	MARSHALL COUNTY	FG-FGA	FT-FTA	RD	P	TP	A
33	SHARON SMITH	9-12	1-3	4	2	19	1
14	GAYE HEIKKINEN	2-3	1-2	1	5	5	5
44	LAURA SEAY	11-13	1-2	14	3	23	0
30	LISA JARRETT	1-5	0-0	1	3	2	4
41	CAROL PARKER	4-7	1-3	15	4	9	2
15	MITZI BIRDSONG	0-1	1-2	1	3	1	1
35	TINA PAYNE	0-1	2-3	2	3	2	2
21	KIM CROWELL	0-1	0-0	2	0	0	0
20	KELLY CHAMBERS	0-0	0-0	0	0	0	0
42	MAGGIE YOPP	0-0	0-0	0	0	0	0
34	PENNY BARRETT	0-0	0-0	0	0	0	0
22	STACI DICK	0-0	0-0	0	0	0	0
		-	-				
		-	-	2 D.B.			
TOTALS		27-43	7-15	42	23	61	15

PERCENTS

62.8 46.7 4

TEAM REBOUNDS (NOT IN TOTAL)

MARSHALL COUNTY
19-13-13-16=61

SCORE BY ORES

OFFICIALS: WYNNE BROWNING & ANNY KEMPER

ATTENDANCE: SESSION THREE

